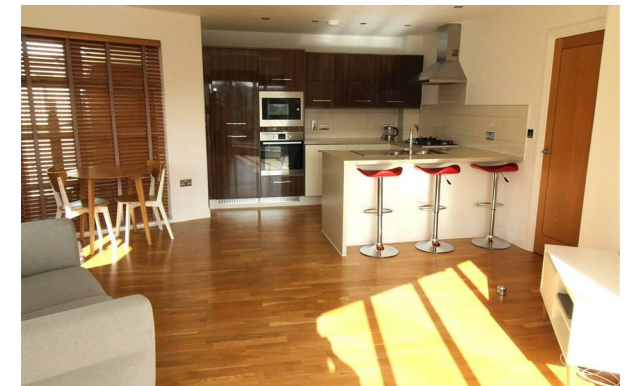


# KE



## 9 Carlton Court The Bridge Approach, Whitstable, CT5 1FL

£1,295 Per Month

- Second floor 2 Bedroom Apartment
- 2 Double Bedrooms
- Modern2 and Spacious Interior
- 0.2 miles from the Train Station
- Private Balcony
- EPC Rating C

106 High Street, Kent, CT6 5LE  
01227 389998

lettings@kimberestates.co.uk  
www.kimberestates.co.uk

## Viewings

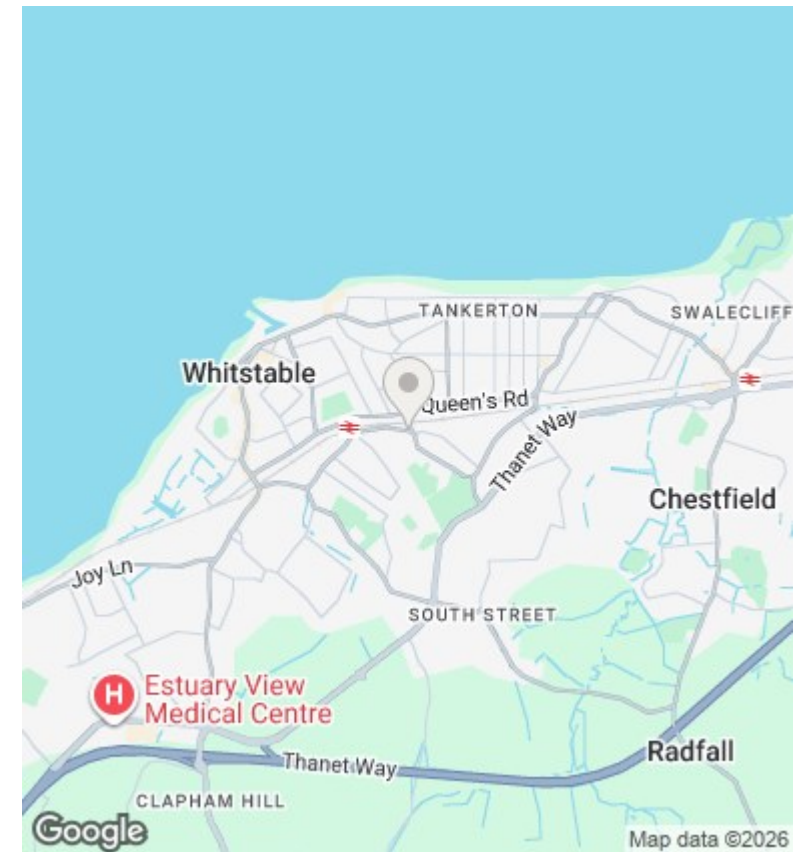
Viewings by arrangement only. Call 01227 389998 to make an appointment.

## Council Tax Band

C

## EPC Rating:

C



Energy Efficiency Rating		
	Current	Potential
<i>Very energy efficient - lower running costs</i>		
(92 plus) <b>A</b>		
(81-91) <b>B</b>		
(69-80) <b>C</b>	80	80
(55-68) <b>D</b>		
(39-54) <b>E</b>		
(21-38) <b>F</b>		
(1-20) <b>G</b>		
<i>Not energy efficient - higher running costs</i>		
<b>England &amp; Wales</b>	EU Directive 2002/91/EC	